



Costume, Hair, & Makeup information

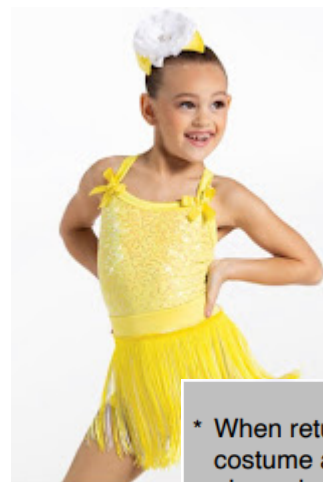
Micro Mini B

Girls Costume Information

(Boys costume on page 2)

Costume items that **must** be worn:

- Costume provided by Tarantism Dance Company (Shown on the right)
- Tan footed dance tights (Dancer's own as they have been wearing to class)
- Hair accessory provided by Tarantism Dance Company (Shown on the right)
- Black jazz shoes are to be worn (Dancer's own as they have been wearing to class)



* When returning your costume at year end please be sure all parts that state "provided by Tarantism Dance Company" as well as the black plastic hanger and transparent garment bag

Hair Information

- Hair is worn slick back in a low bun at the nape of the neck
- Please ensure there are no flyaways

Makeup Information

Makeup is worn by performers so that the dancer's face is visible and highlighted by the stage lights, rather than being washed out. We recommend wearing makeup for the recital, but it is not mandatory.

** Makeup chart is on page 3. **

Boys Costume Information

Costume items that **must** be worn:

- Costume provided by Tarantism Dance Company(Shown on the right)
- Black jazz shoes are to be worn (Dancer's own as they have been wearing to class)

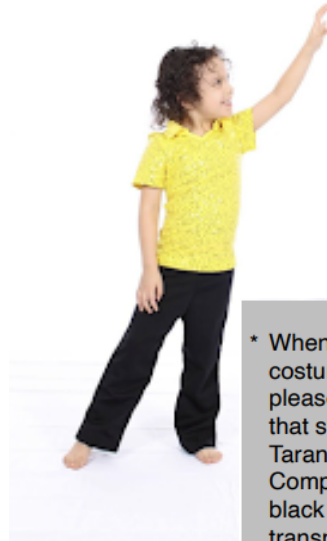
Hair Information

- Hair is worn neatly away from face

Makeup Information

Makeup is worn by performers so that the dancer's face is visible and highlighted by the stage lights, rather than being washed out. We recommend wearing makeup for the recital, but it is not mandatory.

Makeup chart is on page 3.



* When returning your costume at year end please be sure all parts that state "provided by Tarantism Dance Company" as well as the black plastic hanger and transparent garment bag

Makeup Chart

If you have any questions about how to apply the makeup please let us know! We'd be happy to help you!

Products

Face

Foundation (blend evenly on entire face)
Colour that matches dancer's skin tone

Blush (1 on chart)
Pink

Eyes

Brow Highlights (3 on chart)
White eyeshadow

Eyelid (4 on chart)
Light/Medium Brown eyeshadow

Creases (5 on chart)
Dark Brown eyeshadow

Eyeliner (6 on chart)
Black

Mascara (on top and bottom eyelashes)
Black

Lips

Lipstick (7 on chart)
True Red

